

Lacto Japan

Lacto Japan Co., Ltd.

Corporate Profile



Corporate Brand

Nurture the future

Purpose

Bring health and happiness to people
by connecting the world through food

Mission

Contribute to the future of the primary food industries
Create new demand for dairy products
Enrich the lives of all stakeholders

Value

Fairness

Domestic

Dairy Ingredients Division

Cheese Business Division

We import and sell "dairy ingredients" and "cheese" made from raw milk from all over the world.

To meet the needs of our customers, we handle a full lineup of "dairy ingredients" and "cheese," as well as "powdered milk mixtures" that are compliant with the Japanese import system.

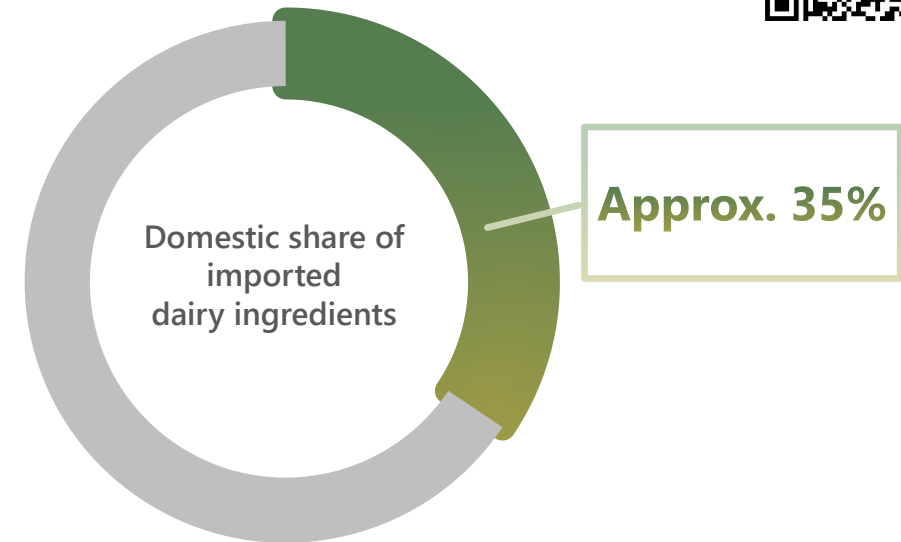
"Powdered milk mixtures" are used in a wide range of food products such as ice cream, yogurt, dairy beverages and other dairy products, as well as ingredients for processed foods such as bread and confectionery. We handle over 500 different products.

In the case of "cheese," we import and sell natural cheese that is mainly used as an ingredient in processed cheese and shredded cheese.

Key Features of Our Businesses

- + Know-how related to dairy Ingredients accumulated since the dawn of Japan's dairy products imports.
- + A well-developed procurement network covering major production areas around the world.
- + Timely provision of market information from representative staff at overseas subsidiaries.

Please use the QR code for more detailed information.



*Estimated based on trade statistics and our sales volume

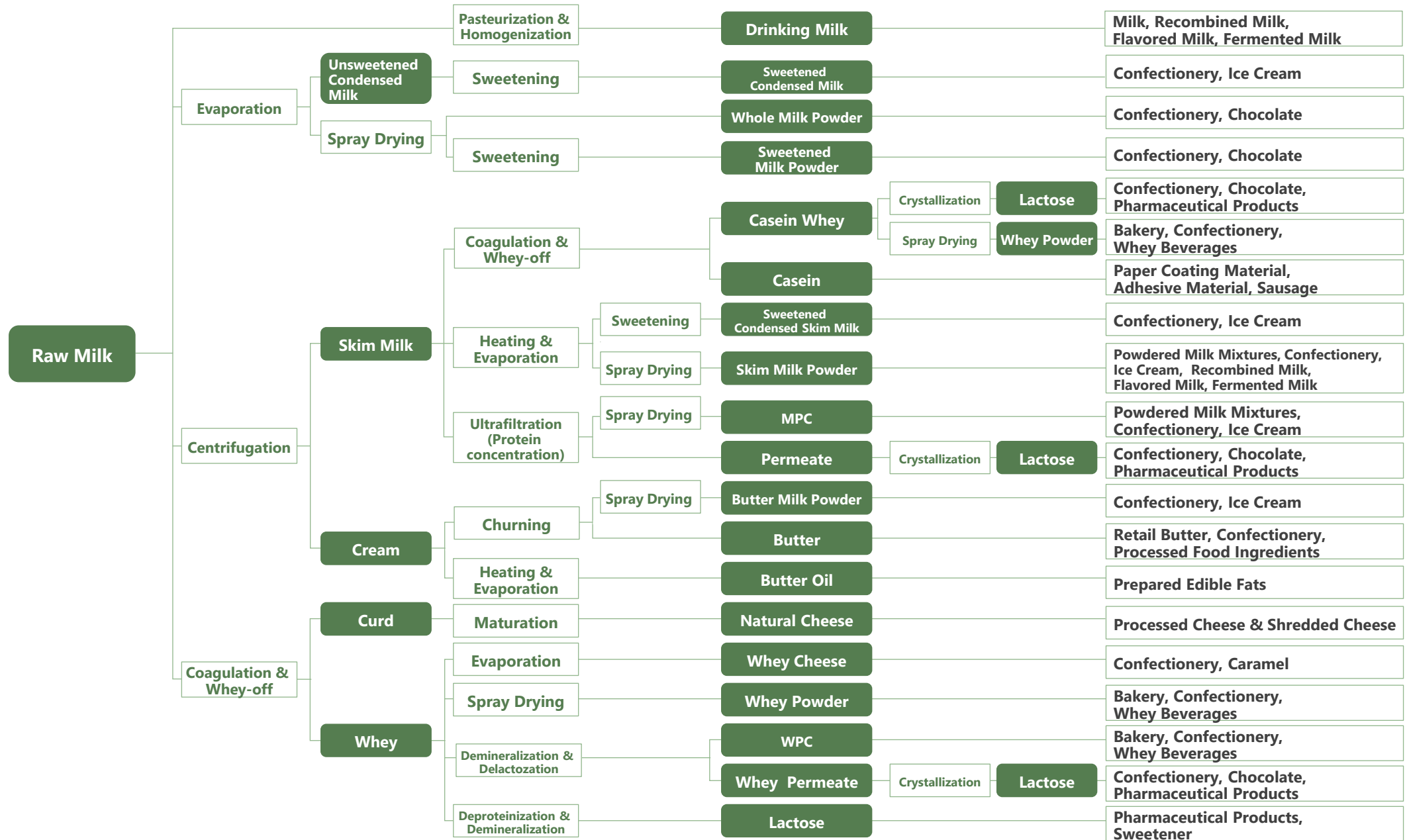
Products (Dairy Ingredients Division)

Whole milk powder, skim milk powder, cream, butter, butter oil, whey powder, casein, caseinate, WPC (whey protein concentrate), powdered milk mixtures, prepared butter mixtures, prepared cocoa mixtures, other milk preparations, lactose, condensed milk, processed egg products(dried eggs, frozen eggs), etc.

Products (Cheese Business Division)

Natural cheese (mainly gouda, cheddar, mozzarella, cream cheese, etc.), processed cheese, casein, etc.

Full Lineup of Dairy Ingredient and Cheese Products



Domestic Business

Please use the QR code for more detailed information.



Meat and Ingredients Division

We import mainly pork (chilled and frozen) and meat products such as dry-cured ham and salami from all over the world and supply them in a stable way to food manufacturers, wholesalers and retailers in Japan.

In recent years, with the aim of responding to customers' diversifying needs and further expanding our business operations, we have focused our efforts on expanding our range of products by including products such as beef and chicken.

Key Features of Our Business

- + For pork, our main supplier is Seaboard Foods in the United States, and we have secured a broad range of supply sources including Canada and Spain.
- + For dry-cured ham, salami, etc., we procure brand-name, high-quality products from Europe and the United States.

Products

Pork (chilled and frozen), beef, chicken, dry-cured ham, salami, precooked bacon, honey, plant-based meat, meat culture, etc.



Domestic Business

Please use the QR code for more detailed information.



Functional Food Ingredients Division

In recent years, there has been an increasing need for the development of foods with improved functionality, based on the theme of “health”. In order to meet these growing health-related needs, Lacto Japan is selling dairy protein, a high protein food ingredient derived from milk, as well as gelatin and collagen, glucosamine, nuts, and other products with appealing functionality.

We sell products to a wide range of buyers, namely, the sports nutrition industry, the beauty and health foods industry, the nursing care industry and the food industry.

Key Features of Our Business

- + In order to meet the demands of customers in various fields, in addition to the introduction of main and secondary raw materials, we offer a wide range of proposals, including proposals for OEM partners, development of new products, and sales support for final products.
- + We are constantly expanding the types of functional food ingredients we handle in response to customer requests.

Products

Dairy protein, vegetable protein, gelatin / collagen, glucosamine, nuts, oats, etc.



Overseas

With our subsidiary in Singapore, Lacto Asia Pte. Ltd., as the nucleus, we have established subsidiaries and affiliated companies in Malaysia, Thailand, the Philippines, Indonesia, and China and are expanding our business operations in the region. In Asia, we operate two businesses: a dairy ingredient sales business (trading company) and a cheese manufacturing and sales business (manufacturer).

Asian Business (Dairy Ingredients Sales Division)



The main business of dairy ingredient sales is the import and sale of dairy ingredients procured from various countries around the world.

Utilizing our know-how as a trading company of dairy ingredients cultivated in Japan, we sell dairy ingredients to Japanese and local companies operating in Asia.



Products (Dairy Ingredients Sales Division)

Whole milk powder, skim milk powder, powdered milk mixtures, etc.

Asian Business (Cheese Manufacturing & Sales Division)



In the case of cheese manufacturing and sales, we manufacture our original brand of processed cheese and shredded cheese for commercial use at our factories in Singapore and Thailand, Indonesia, and sell it to customers in Asian countries.



Singapore

Processed cheese,
Shredded cheese
manufacturing

Thailand

Processed cheese,
Shredded cheese
manufacturing

Indonesia

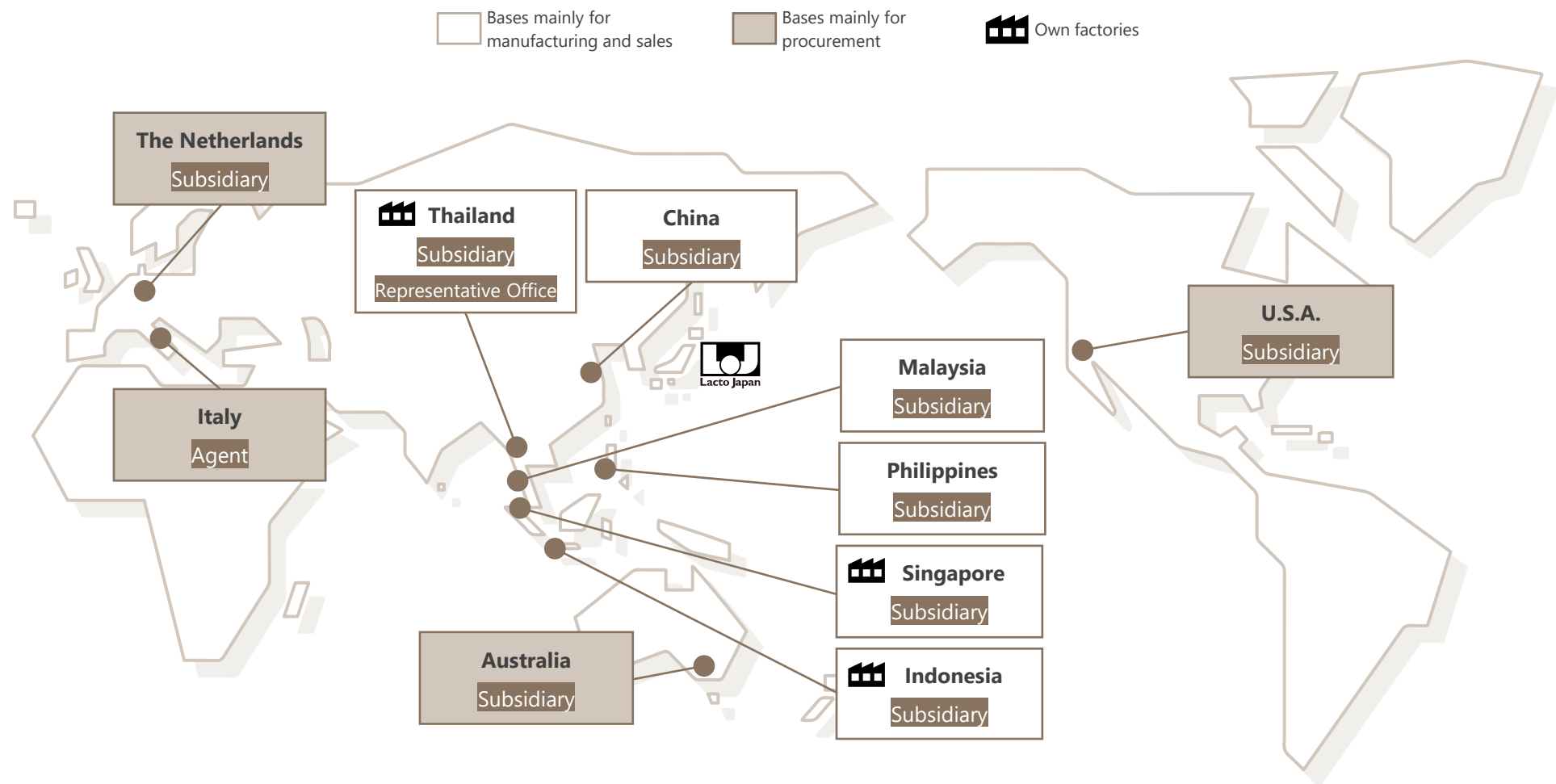
Shredded cheese
manufacturing

Products (Cheese Manufacturing & Sales Division)

Processed cheese (original brand), natural cheese, shredded cheese

Global Network

Lacto Japan has local subsidiaries in major production areas for dairy products, meat and processed meat products, and has established a procurement network that covers major suppliers worldwide.



Please scan here for the addresses and contact information of our overseas bases and offices.



Corporate Data

Company Name	Lacto Japan Co., Ltd.
Address	22nd Floor Taiyo Life Nihonbashi Building, 2-11-2 Nihonbashi, Chuo-ku, Tokyo, 103-0027 Japan
Phone Number / FAX	TEL: +81-3-6281-9701 FAX: +81-3-6281-9748
Directors	President Motohisa Miura Director Masayuki Maekawa <Audit Committee> Director Takashi Abe Director Kimiaki Abe Director Shin Kojima Director Naofumi Hara Director Kenji Bundo Director Toshio Hoga Director Yasuhiro Ikeda Director Hiroko Sakamoto (Outside) (Outside)
Established	May 1998
Capital	JPY 1,158 million (As of November 30, 2022)
Number of Employees (Consolidated)	364 (As of November 30, 2022)
Business	Foreign and domestic trade in agricultural and livestock products and processed products, food additives, food processing machinery, pharmaceuticals , quasi-pharmaceuticals , liquor and other beverages, and food products; agent, broker.

Please use the QR code for more detailed information.

Website home



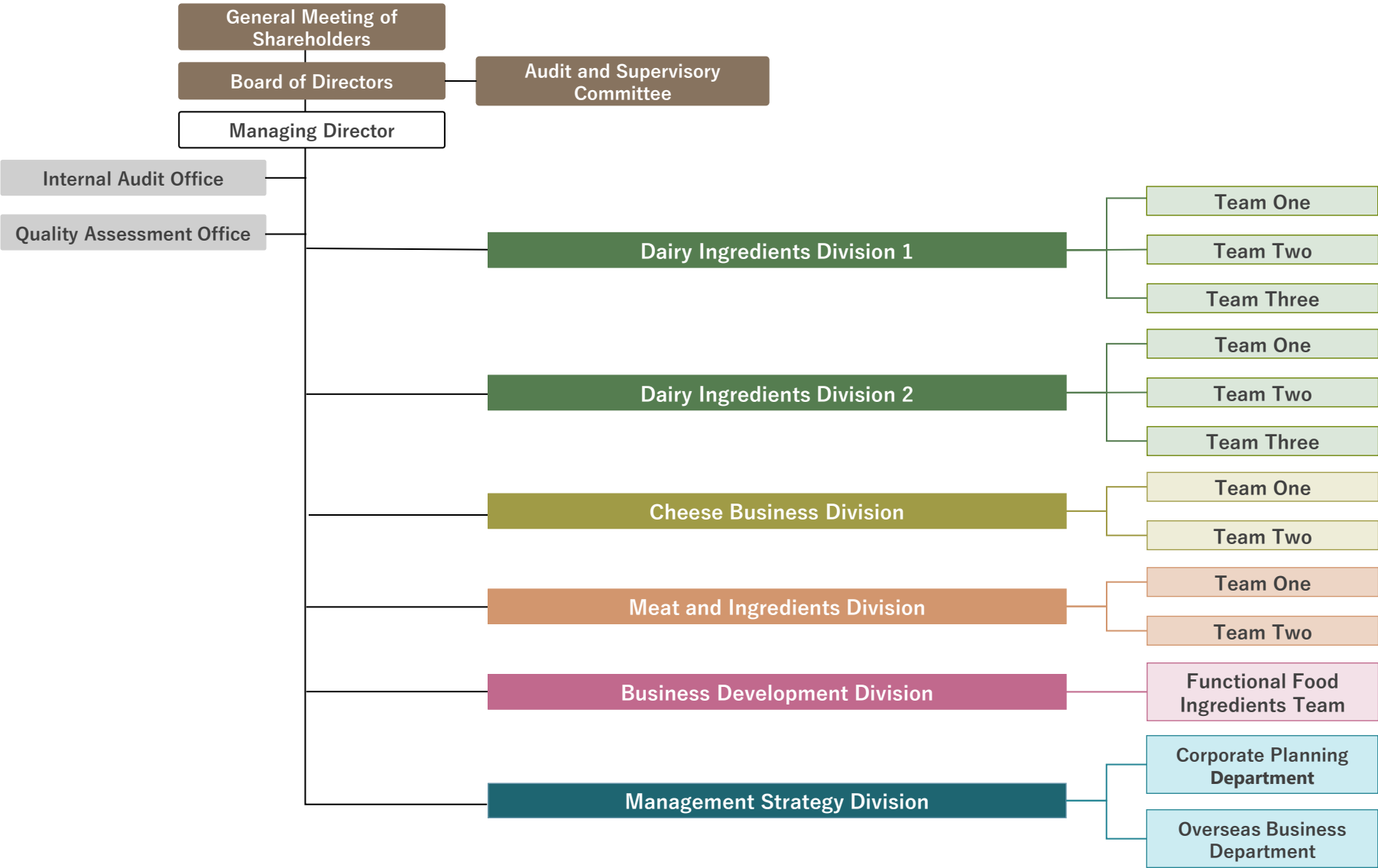
▣ The Future We Are Aiming for



□ Sustainability



Organization Chart



History

- 1998 ● May Established Lacto Japan Co., Ltd.,
 Oct Representative office opened in U.S.
 Nov Representative office opened in Singapore
- 1999 ● Jun Representative office opened in Australia
 Subsidiary Lacto Japan (Asia) Pte. Ltd., established in Singapore
- 2000 ● Feb Representative office opened in the Netherlands
 Apr Designated importer for Agriculture & Livestock Industries Corporation (ALIC)
- 2003 ● Dec Subsidiary Foodtech Products Pte. Ltd., established in Singapore
- 2005 ● Mar Began sourcing and selling processed meat products
- 2008 ● Jul Lacto Asia Pte. Ltd., established through the merger of two subsidiaries in Singapore
 Nov Invested in U.S. company Kawaguchi Trading & Consulting Inc.
- 2009 ● Sep Subsidiary Lacto Oceania Pty. Ltd. established in Australia
 Oct Subsidiarized Kawaguchi Trading & Consulting Inc. and changed the name to Lacto USA Inc.
- 2010 ● Sep Subsidiary Lacto Asia (M) Sdn. Bhd., established in Malaysia
- 2012 ● Feb Joint venture PT. Pacific Lacto JAYA, established in Indonesia
- 2013 ● Aug Subsidiary Foodtech Products (Thailand) Co., Ltd., established in Thailand
 Nov Subsidiary Lacto Shanghai Co., Ltd., established in China
- 2015 ● Aug Listed on the second section of the Tokyo stock exchange
 Dec Subsidiary Lacto Europe B.V. established in the Netherlands
- 2017 ● Sep Listed on the first section of the Tokyo stock exchange
- 2019 ● Jan Representative office opened in Thailand
 Sep Subsidiary Lacto Philippines, Inc. established in the Philippines
- 2021 ● Feb Transition to a Company with an Audit and Supervisory Committee
 Mar Subsidiary LJ Foods Co., Ltd established in Japan
 Nov Subsidiary PT. Lacto Trading Indonesia established in Indonesia
- 2022 ● Apr Transited from 1st Section of the Tokyo Stock Exchange to the Prime Market
 ↓



For the Future



Lacto Japan

Lacto Japan Co., Ltd.
22nd Floor Taiyo Life Nihonbashi Building,
2-11-2 Nihonbashi, Chuo-ku, Tokyo, 103-0027 Japan
TEL: +81-3-6281-9701
<https://www.lactojapan.com/en/>